



**FW20**

**NEW  
ARRIVALS**

**FW20**  
NEW  
ARRIVALS



**FW20**  
**NEW ARRIVALS**

  
**REDA**


A PASSION FOR WOOL  
 SINCE 1865



**TRE2253**

100VV    
 280gr

**TRE2274**

100VV   
 275gr

**ATTO**

In Italian ATTO means Dynamic. This functional fabric offers natural stretch comfort, is resilient and easy to care for, and has a soft feel.

**A PASSION FOR WOOL SINCE 1865**

1865 marks the start of a wonderful story, a tale of authentic passion for wool. It all began with a winning hunch by enterprising businessman Carlo Reda, who took control of an old mill to lay the foundation for his own first wool mill which was subsequently expanded over the years by his son Giovanni until 1919. Then Albino and Francesco Botto Poala acquired the entire complex. From then on REDA would never stop growing, while also staying deeply rooted in tradition and enriching the specialized hand craftsmanship skills of its workers in the Biella area at the same time.

Innovation and technology are the two keywords for this mill with their self-avowed mission of creating fabrics that are synonymous with quality, luxury and unique appeal, fully worthy of representing the Italian lifestyle in the world of classic men's fashions.



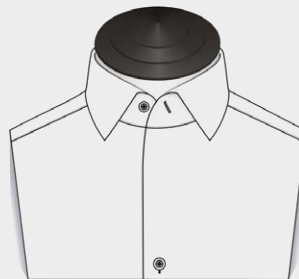
# FW20

## NEW ARRIVALS SUITS



**TRE2274**

100WV  
275gr

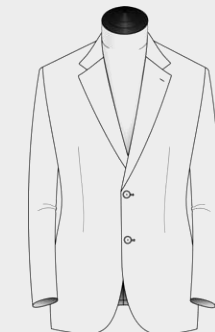


One-piece Collar+ Neckband  
Collar point 7.7cm | 3"  
Back height 4.8cm | 1 7/8"



**TRE2254**

100WV  
280gr



Notch w Low Gorge

Closure  
2B.3B Roll-over  
Lapel Width  
Notch w Low Gorge 9.2cm | 3 5/8"  
Notch w Low Gorge 10.2cm | 4"  
Notch w Low Gorge 11.2cm | 4 3/8"



**FW20**  
NEW  
ARRIVALS

**E.THOMAS**



**TRE2209**

95WV5WS  
220gr



**TRE2213**

95WV5WS  
230gr



Cashmere wool blended,  
95% wool 5% cashmere  
130's with a weight of 250g.  
This fabric has a smooth feel  
and is remarkably light.  
The 5% cashmere content  
subtly enhances the hand  
and sense of fine quality.



**TRE2210**

95WV5WS  
220gr



**TRE2211**

90WO10WS  
280gr



### ETHOMAS BRAND INTRODUCTION

E.THOMAS holdings was founded in 1922 and is a fully integrated top Italian fabric manufacturer.

Following the enterprise development strategy of "top quality and continuous innovation", they offer a perfect combination of details and luxurious materials. Today E.THOMAS is recognized as one of the world's top four men's fabric production facilities. (Loro, Zegna, E.T, 1881)



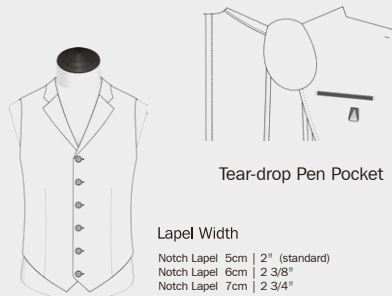
# FW20

## NEW ARRIVALS SUITS



TRE2213

95WV5WS  
230gr



Tear-drop Pen Pocket

Lapel Width

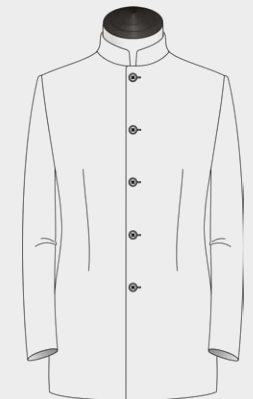
Notch Lapel 5cm | 2" (standard)  
Notch Lapel 6cm | 2 3/8"  
Notch Lapel 7cm | 2 3/4"

Notch Lapel



TRE2280

100WV  
250gr



5B Mandarin Collar



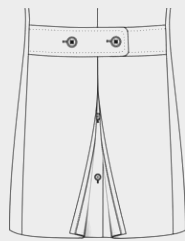
# FW20

## NEW ARRIVALS

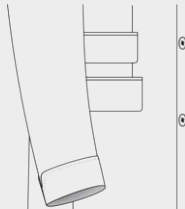
### OVERCOATS



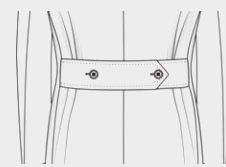
4 Btn Double Breasted Shawl Collar



Medium Inverted Vent w  
2 Fastening Buttons



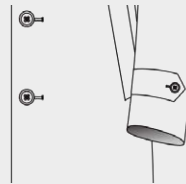
Gauntlet Cuff w No Button



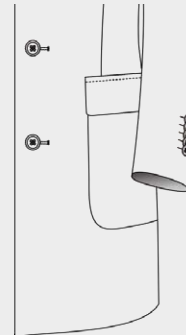
Back Belt w 2 Btns Pointed Ext



5 Btn Fly Front Car Coat Collar



Long Tab w 1 Btn



Round Patch w Flap

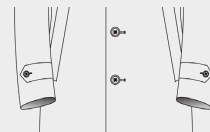


# FW20

## NEW ARRIVALS OVERCOATS



Pea coat  
Jetted w Side Access



Long Tab w 1 Btn



Self Fabric Belt



Raglan Sleeve

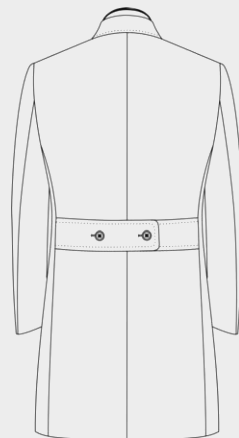
Medium Inverted Vent w  
2 Fastening Buttons



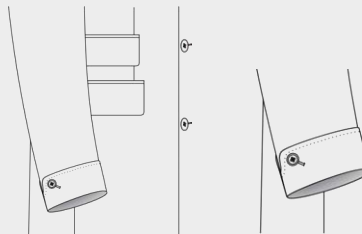


# FW20

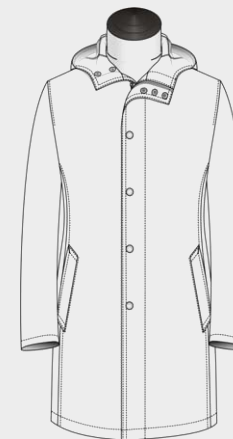
NEW  
ARRIVALS  
OVERCOATS &  
TRENCHCOATS



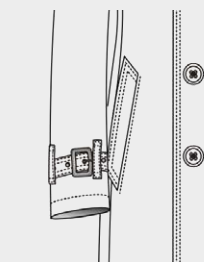
Back Belt w 2 Btns Square Ext



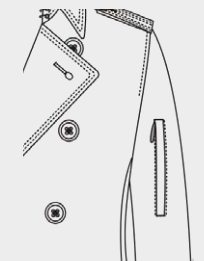
Gauntlet Cuff w 1 Button



Snap Btns + Zipper w  
Self-Fabric Hood



Removable Cuff Tab  
w Buckle



Sleeve Pocket w Zipper



**FW20**

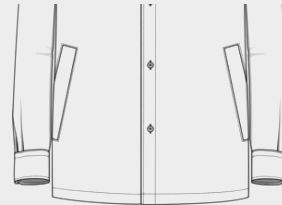
**NEW ARRIVALS  
CASUAL SHIRTS**



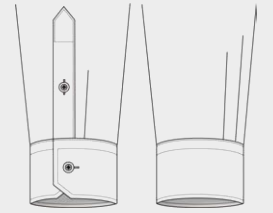
Button Down High



No Placket



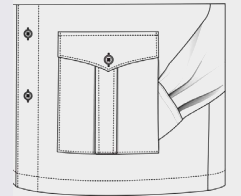
Welted Side Access



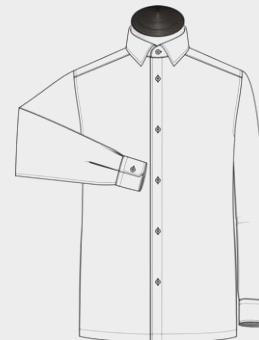
3 Pleats



Single 1Btn



Sq. w Box Pleat, Pointed Flap & Btn w Side Access Opening



Long Sleeves without Placket



# FW20

## NEW ARRIVALS CASUAL SHIRTS



### Fabric recommendation



TRE2232



TRE2234



TRE2267



TRE2229



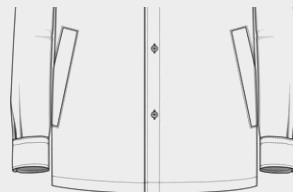
Button Down



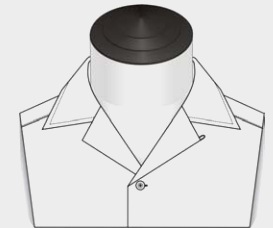
Single 1Btn



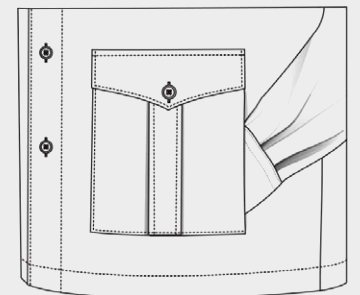
Mitred w Box Pleat, Pointed Flap & Btn  
(Left & Right)



Welted Side Access



Camp Collar



Sq. w Box Pleat, Pointed Flap & Btn w  
Side Access Opening



# FW20

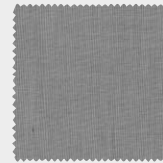
## NEW ARRIVALS CASUAL SHIRTS



### Fabric recommendation



TSHL231



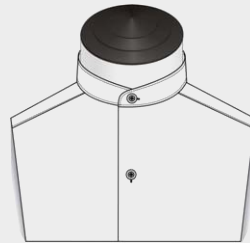
TSHL217



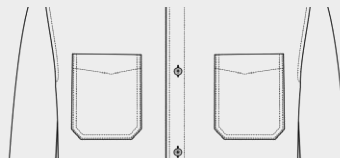
TSHL237



TSHT267



Mao Low 2cm



Mitred with Pointed Welt Stitching  
(Left & Right)



### Fabric recommendation



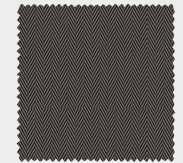
TT019



TT016



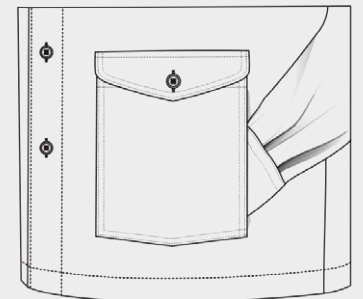
TT009



TT003



X-Large Pkt w Flap & Button  
(Left & Right)

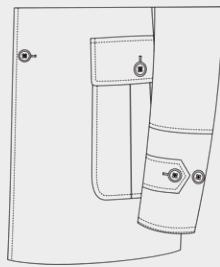


Sq. w Flap & Btn w Side Access Opening

**FW20**  
**NEW ARRIVALS**  
**HUNTING JACKETS**



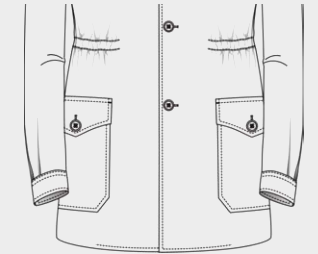
2B Stand Up Collar w Detachable Hood



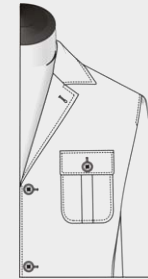
2B Adjustable Wide Cuff



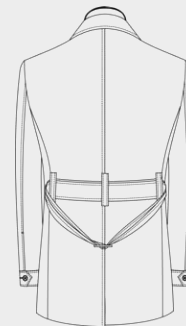
Shoulder Epaulettes



Mitered Patch w Pointed Flap & Btn



Unconstructed  
(no shoulder pad)



Removable Belt w  
Sewn-In Loops & buckle



# FW20

## NEW ARRIVALS HUNTING JACKETS



### Fabric recommendation



TRE2241



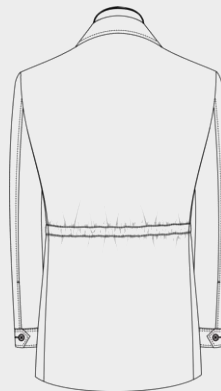
TRE2235



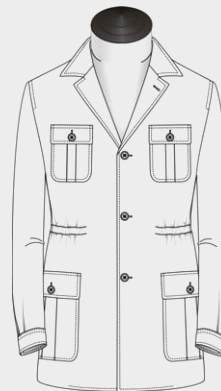
TRE2276



TRE2270



Internal Draw String



Curved Pleated Patch w  
Straight Flap & Btn



### Fabric recommendation



TT012



TT017



TT013



TT015



2B Stand Up Collar w 2B Flap Hood

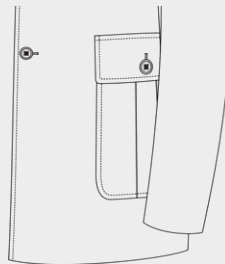


# FW20

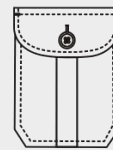
## NEW ARRIVALS HUNTING JACKETS



Medium Collar w 2B Flap Hood



Plain



Mitered Pleated Patch w  
Rounded Flap & Btn



### Fabric recommendation



TR9103



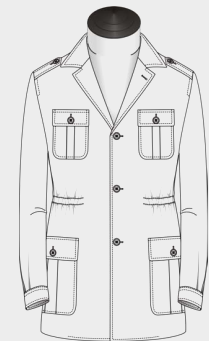
TR9104



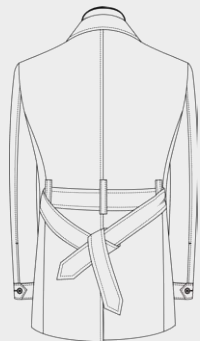
TR9105



TR9106



Shoulder Epaulettes



Removable Belt w  
Sewn-In Loops

